

## DESCRIPTION

A solenoid-operated, 2-way, direct-acting, spool-type, normally open, screw-in, hydraulic cartridge valve designed to function as bidirectional blocking valve in low flow circuits.

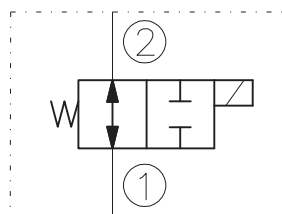
## OPERATION

When de-energized, the EV56-2K allows flow in both directions. When energized, the valve's spool shifts to close bidirectionally.

## RATINGS

- Operating Pressure: 200bar
- Flow: 8 l/min max.
- Internal Leakage: 82 cc/minute max. at 200bar
- Temperature: -20°C to 90°C with standard Buna N seals
- Coil Duty Rating: Continuous from 85% to 115% of nominal voltage
- Minimum Pull-in Voltage: 85% of nominal at 200bar
- Filtration: Recommended 25µm nominal or better
- Fluids: Mineral-based or synthetics with lubricating properties at viscosities of 7,4 to 420 cSt
- Installation: No restrictions
- Cavity: CC06-2 ; See "CAVITIES AND BODIES" brochure

## SYMBOL



## CAVITY

See "CAVITIES AND BODIES" brochure

## TO ORDER

EV56-2K

Voltage	Seals
0 - Without coil	N - Buna N
12 - 12V DC	V - Viton A
24 - 24V DC	
11 - 110V RAC	
22 - 220V RAC	

Terminations DIN 43650.  
See "Accessories" brochure

## PERFORMANCE (Cartridge Only)

